



# WINDERFURL

*sails furling sistem*



2019

[www.goldservicerigging.it](http://www.goldservicerigging.it)

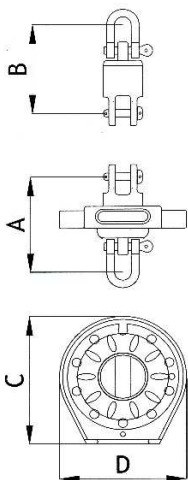
## DATA SHEET



<b>Boat size</b>	<b>&lt;27 ft</b>
Drum diameter	100 mm
Pin diameter	8 mm
Max line diameter	6 mm
Working Load	800 Kg
Breaking load	1000 Kg
Weight	550 g

- made of aluminum 6082 and stainless steel
- fast lines loop loading
- stainless steel shackle
- pin with security lock
- exit line orientable

## FURLING SISTEM FOR CODE 0 AND GENNAKER



### dimensions

A	80mm
B	80mm
C	107mm
D	100mm

### MAX. SAIL AREA

Code 0	20 Mtq
Gennaker	40 Mtq



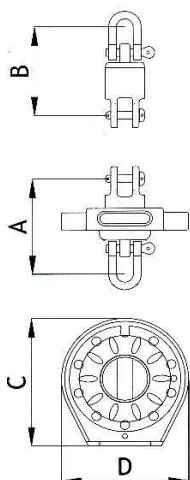
## DATA SHEET



Boat size	< 33 ft
Drum diameter	120 mm
Pin diameter	8 mm
Max line diameter	8 mm
Working Load	1200 Kg
Breaking load	2000 Kg
Weight	650 g

- made of aluminum 6082 and stainless steel
- fast lines loop loading
- stainless steel shackle
- pin with security lock
- exit line orientable

## FURLING SYSTEM FOR CODE 0 AND GENNAKER



### dimensions

A	85mm
B	85mm
C	130mm
D	120mm

### MAX. SAIL AREA

Code 0	40 Mtq
Gennaker	70 Mtq



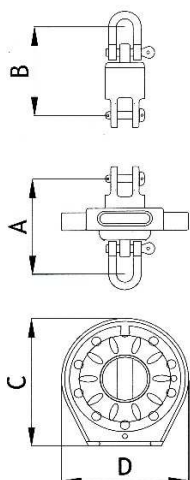
## DATA SHEET



Boat size	< 40 ft
Drum diameter	120 mm
Pin diameter	8 mm
Max line diameter	8 mm
Working Load	1500 Kg
Breaking load	3500 Kg
Weight	800 g

- made of aluminum 6082 and stainless steel
- fast loop loading
- stainless steel shackle
- pin with security rapid lock
- exit line orientable

## FURLING SYSTEM FOR CODE 0 AND GENNAKER



### dimensions

A	110mm
B	110mm
C	130mm
D	120mm

### MAX. SAIL AREA

Code 0	60 Mtq
Gennaker	100 Mtq





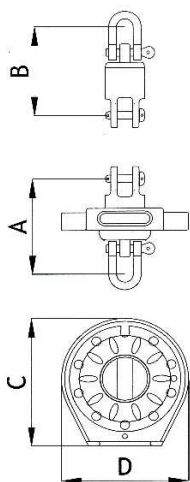
## DATA SHEET



Boat size	< 47 ft
Drum diameter	120 mm
Pin diameter	10mm
Max line diameter	8 mm
Working Load	2500 Kg
Breaking load	5000 Kg
Weight	850 g

- made of aluminum 6082 and stainless steel
- fast loop loading
- stainless steel shackle
- pin with security rapid lock
- exit line orientable

## FURLING SYSTEM FOR CODE 0 AND GENNAKER



### dimensions

A	115mm
B	115mm
C	130mm
D	120mm

### MAX. SAIL AREA

Code 0	80 Mtq
Gennaker	110 Mtq



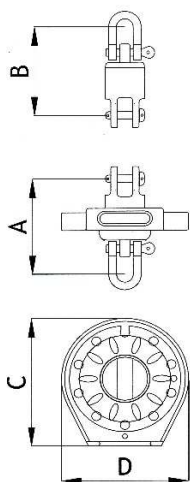
## DATA SHEET



Boat size	< 50 ft
Drum diameter	150mm
Pin diameter	10 mm
Max line diameter	10mm
Working Load	2500 Kg
Breaking load	5000 Kg
Weight	950 g

- made of aluminum 6082 and stainless steel
- fast loop loading
- stainless steel shackle
- pin with security rapid lock
- exit line orientable

## FURLING SYSTEM FOR CODE 0 AND GENNAKER



### dimensions

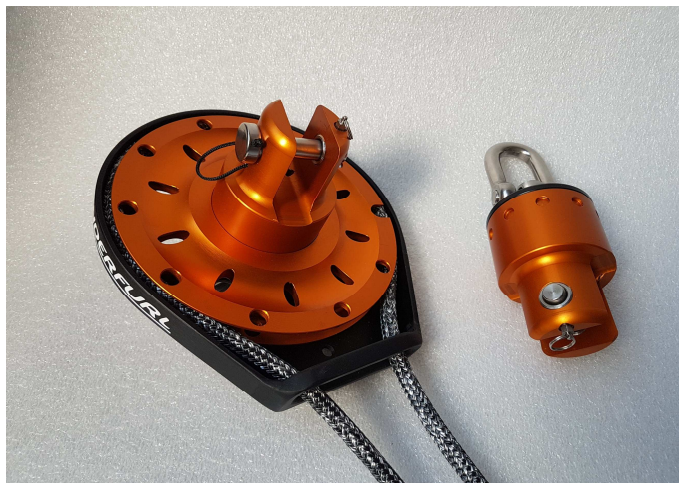
A	115mm
B	115mm
C	168mm
D	152mm

### MAX. SAIL AREA

Code 0	100 Mtq
Gennaker	200 Mtq



## DATA SHEET



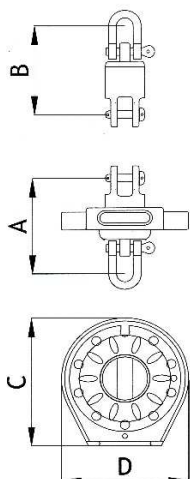
### Boat size

< 65 ft

Drum diameter	200 mm
Pin diameter	12 mm
Max line diameter	10mm
Working Load	5000 Kg
Breaking load	10000 Kg
Weight	2200 g

- made of aluminum 6082 and stainless steel
- fast loop loading
- stainless steel shackle
- pin with security rapid lock
- exit line orientable
- alluminium case

## FURLING SISTEM FOR CODE 0 AND GENNAKER



### dimensions

A	140mm
B	140mm
C	215mm
D	200mm

### MAX. SAIL AREA

Code 0	130 Mtq
Gennaker	250 Mtq



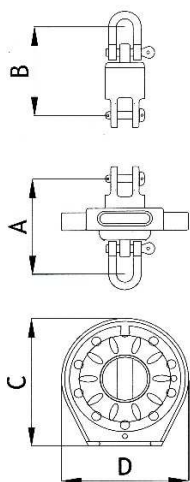
## DATA SHEET



Boat size	< 65 ft
Drum diameter	200 mm
Pin diameter	14 mm
Max line diameter	10mm
Working Load	6500 Kg
Breaking load	14000 Kg
Weight	2300 g

- made of aluminum 6082 and stainless steel
- fast loop loading
- stainless steel shackle
- pin with security rapid lock
- exit line orientable
- carbon case

## FURLING SYSTEM FOR CODE 0 AND GENNAKER



### dimensions

A	140mm
B	140mm
C	215mm
D	200mm

### MAX. SAIL AREA

Code 0	160 Mtq
Gennaker	300 Mtq





# WINDERFURL Free Tack



Cod. GK	Boat Size < 27 ft
For Drum	WF6 – WF8
Max. Area	70 Mtq
Ball bearing	Torlon

- Made of aluminum 6082
- complete with terminal for cable**



Cod. FT	Boat Size < 50 ft
For Drum	WF10 WF11 WF12 WF14
Max. Area	200 Mtq
Ball bearing	Torlon

- Made of aluminum 6082
- Adjustable position

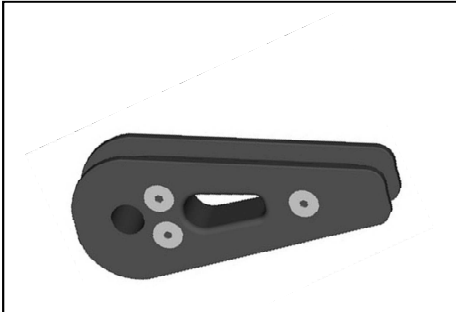
**if combined with TD the tack is adjustable during navigation**



Cod. TD	Boat Size < 50 ft
For Drum	WF10 WF11 WF12 WF14
Max. Area	300 Mtq
Ball bearing	Torlon

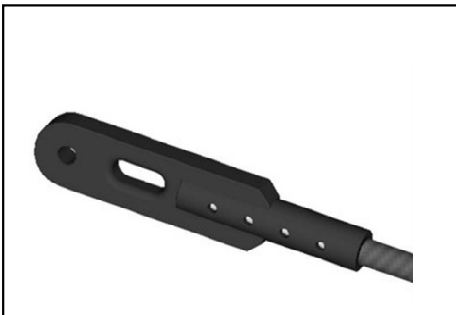
- Made of aluminum 6082

# WINDERFURL **Thimbles**



Cod. RD	
For Drum	All
For cable mm	9 – 11 – 13 – 15 - 17

- Made of aluminum



Cod. MT	
For Drum	WF6 > WF12
For Cable mm	9 -11 -13

- Made of aluminum
- **quick splicing**
- **Rotation centered on axis**



Cod. RDM	
For Drum	WF10 WF11 WF12
For Cable mm	9 -11- 13

- Made of aluminum 6082
- **quick splicing**
- **RD Thimbles included**

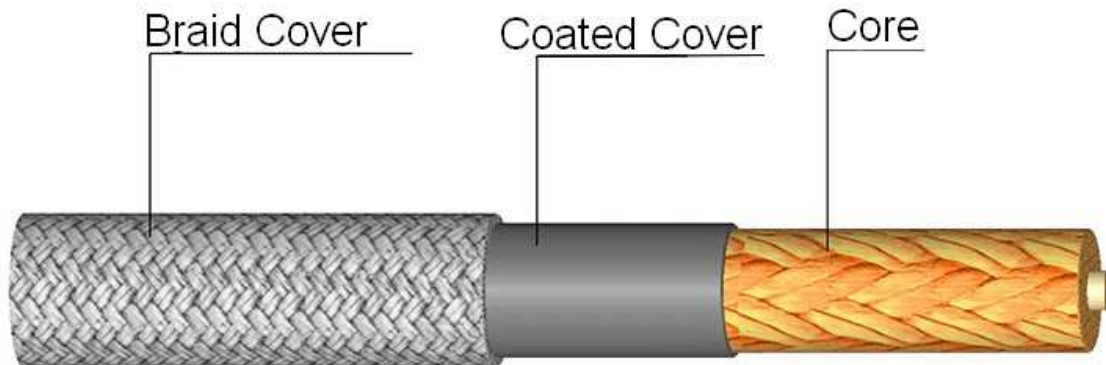


Cod. RX	
For Drum	All
For Cable	All

- Made of stainless steel

# WINDERFURL AT Cable

Anti-torsion Cable



Cod.	Diameter	Braided	Core	Breaking load
ATC9	9 mm	Polyester - Aramid	Aramid	4391 KG
ATC11	11 mm	Polyester - Aramid	Aramid	6560 Kg
ATC13	13 mm	Polyester - Aramid	Aramid	7872 Kg
ATC15	15 mm	Polyester - Aramid	Aramid	13120 Kg
ATH11	11 mm	Polyester- Dyneema	Dyneema - PVC	6100 Kg
ATH13	13 mm	Polyester- Dyneema	Dyneema - PVC	9700 Kg
ATH15	15 mm	Polyester- Dyneema	Dyneema - PVC	12600 Kg
ATH17	17 mm	Polyester- Dyneema	Dyneema - PVC	17700 Kg



Protective sleeve for cable

Cod.	For Cable
AGN	All

- protects the sail in the top-down furling

Gold Service Sas. Via Bagnolo, 43 Ravenna Italia

+39- 0544-554241 3386305338 [info@goldservicerigging.it](mailto:info@goldservicerigging.it)

[www.goldservicerigging.it](http://www.goldservicerigging.it)

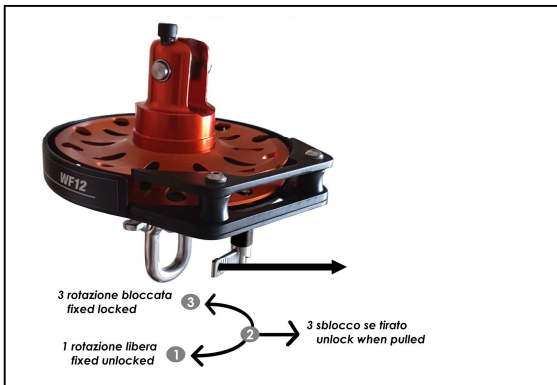
# WINDERFURL Accessories



## F' r lin ( lines

Cod.	Diam.	Lenght loop diam.	For Drum
LC6	6mm	4 – 8 mt	WF6
LC8	8mm	6 – 12 mt	WF8 WF10 WF11
LC10	10mm	6 – 20 mt	WF12 WF14

- Polyester



## R a \$i% ) l o \*

Cod.	For Drum
BR	WF10 – WF11 – WF12 – WF14

Lock the drum rotation when it is not in use



## + ' i \* s " a \* l e

Cod.	For Drum
MR	WF6 – WF8 - WF10 – WF11 – WF12 – WF14



## T a \* l e b l o \* , -.

Cod.	For Drum
PA	WF6 – WF8 - WF10 – WF11 – WF12 – WF14

It can be inserted under the drum to hoist the tack or on the swivel for the 2: 1 halyard



## Double Fairlead

Cod.	For Lines
GC	All

- Double Fairlead consist of a composite bracket fitted to a 25 mm or 30 mm stanchion and a spring loaded "push-and-twist" bracket in stainless steel. Easy to open to attach the line and just as easy to close



WINDERFURL is produced in Italy by

**GOLD SERVICE S.a.s**

Via Bagnolo, 43 Casemurate

48125 Ravenna

Italia

+39 0544-554341      338 6305338

[info@goldservicerigging.it](mailto:info@goldservicerigging.it)

[www.goldservicerigging.it](http://www.goldservicerigging.it)